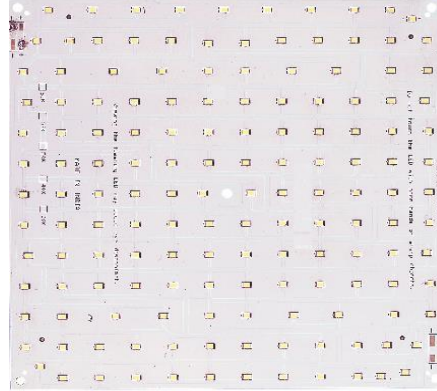




TECHNICAL DATA SHEET : LED MODULE

Project : STANDARD
Model No : HR210S15103MCAB

68W LED PANEL 210x210mm SQUARE



Input Characteristics			Mechanica
1	Typical Voltage (Un)	45Vdc	Weight
2	Operating Voltage Range	45- 50Vdc	Panel Dimensions
3	Typical Current (A)	1.5A	Length W/Mount
4	Wattage (W) MAX	68W	Width
5	Nos Of LEDs	150	Center to Center (CTC)
6	LEDs Aray Combination	15 In Series 10 Parallel	Thickness
7	Viewing Angle	120° degree	
8	LED Color Temperture	6500K	PCB Material
9	Luminous flux	7480lm*	Polarity Connection
10	Operating Temperture	-15°C to 50°C	Input Connections
11	Maintenace of Lumen output -L70	50,000 hours at 25°C	Wires Colors and Polarity
12	LED Make	BRIDGELUX	Input (Red & Black)
13	LED Package	2835	Output (White)

Environmental Operating Details			Featu	
1	Minimum Ambient Temperature	-30°C	1. High System Efficiency - 110lm/W. 2. High Color Redering and good ligh 3. Energy Saving. 4. Improve working enviroment. 5. Long life time: 25,000 hours minin 6. * Lumen Flux depend on Reflector	
2	Maximum Ambient Temperature	50°C		
Ordering Information				
Sr No	Model Number	Description		Case Lot
1	HR210S15103MCAB	LED PANEL 210X210mm SQUARE		50

Add:-SR.NO. 14, Dhadge ind Estate, plot no.3 Singhgad Road, Nanded Phata, Pune-411041, Maharashtra(India),Mobile no:8668

Email : marketing@hrindustry.net , hrindustry12@outlook.com ,web:- www.hrindustry.net ,Contact:- 968999702,9049378851



Details

170gm

210*210

210mm

210mm

231mm

1.60mm

MCPCB

On PCB

Wires

Positive (+ve)

Negative (-ve)

res

t uniformity.

um.

/Diffuser.

334832