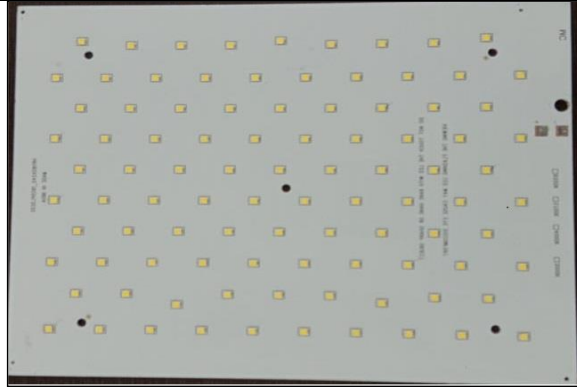


TECHNICAL DATA SHEET : LED MODULE

Project : STANDARD
Model No : HR180R40004MCAS

120W LED PANEL 180x240mm RECTANGULAR



Input Characteristics

Mechanical Details

1	Typical Voltage (Un)	120 Vdc	Weight	180gm
2	Operating Voltage Range	120 - 125Vdc	Panel Dimensions	180*240MM
3	Typical Current (A)	1A	Length W/Mount	240mm
4	Wattage (W) MAX	120W	Width	180mm
5	Nos Of LED	40	Center to Center (CTC)	170mm
6	LEDs Aray Combination	40 in Series	Thickness	1.6mm
7	Viewing Angle	120°Degree		
8	LED Color Tempreture	6500K	PCB Material	MCPCB
9	Luminous flux	13200lm*	Polarity Connection	On PCB
10	Operating Tempreture	-15° to 50°C	Input Connections	Wires
11	Maintenace of Lumen output -L70	50,000 hours at 25°C	Wires Colors and Polarity	
12	LED Make	SAMSUNG	Positive (+ve)	RED
13	LED Package	Z5M2	Negative (-ve)	BLACK

Environmental Operating Details

Features

1	Minimum Ambient Temperature	-30°C	1. High System Efficiency - 110lm/W. 2. High Color Redering and good light uniformity. 3. Energy Saving. 4. Improve working enviroment. 5. Long life time: 25,000 hours minimum. 6. *Lumen Flux depend on Reflector/Diffuser.
2	Maximum Ambient Temperature	50°C	

Ordering Information

Sr No	Model Number	Description	Case Lot
1	HR180R40004MCAS	LED PANEL 180X240mm Rectangular	50

Add:-SR.NO. 14, Dhadge ind Estate, plot no.3 Singhgad Road, Nanded Phata, Pune-411041, Maharashtra(India),mobile no:8668334832
Email : marketing@hrindustry.net ,hrindustry12@outlook.com , web:- www.hrindustry.net , Contact:- 9049378851,9689999702